

new Laminam
architecture
& design
in the world /

04.
2013

03	Esterni/External
43	Interni/Interior
89	Arredamento/Furniture



esterni /
+external /

esterni/external



2010
Laminam S.p.a Headquarters - Fiorano Modenese - Italy
LAMINAM ESTERNA
Collection Nero 1000x3000



esterni/external



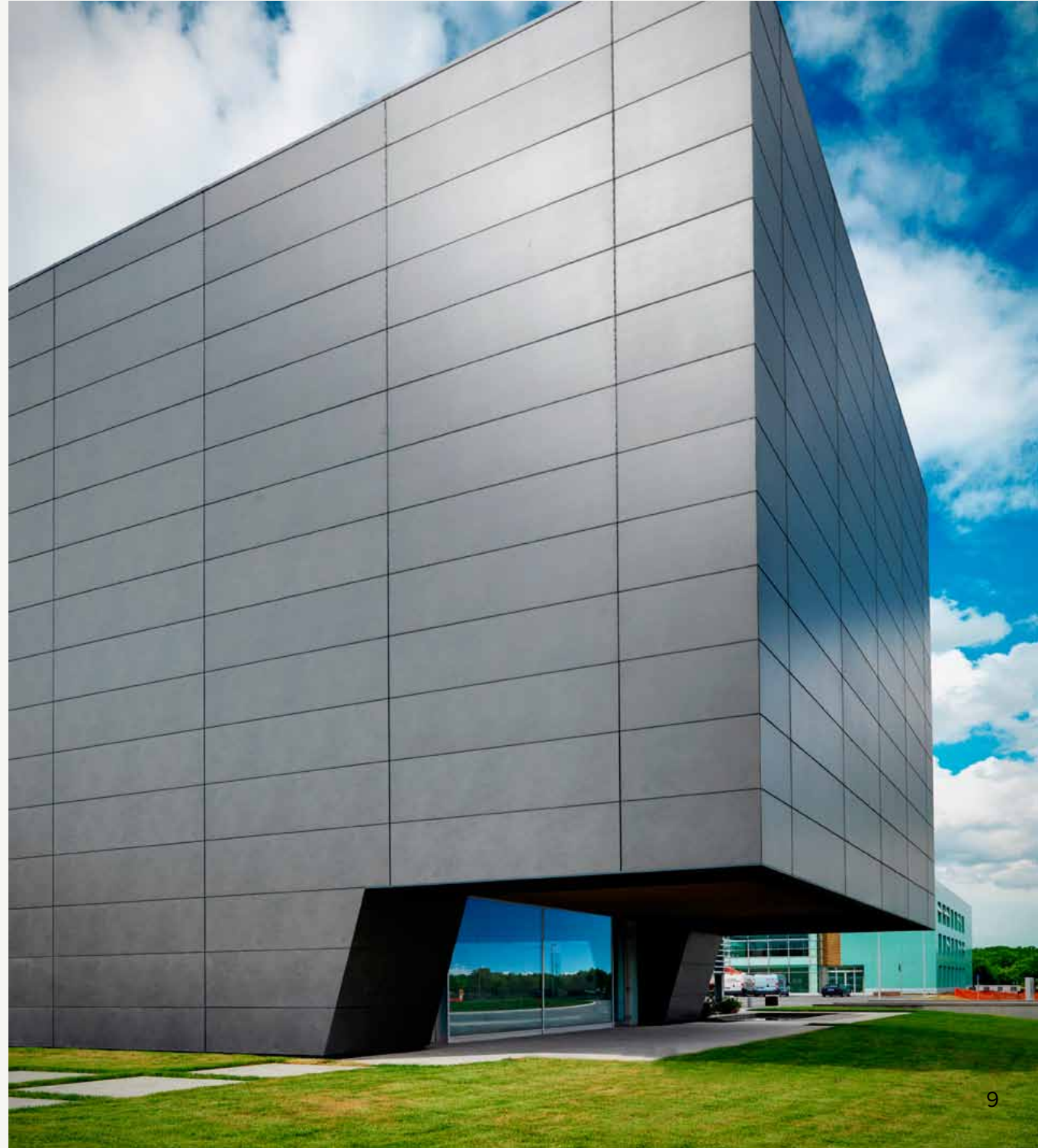
2010
Commercial Building - Seoul - South Korea
LAMINAM 3+
Collection Moro 1000x3000



esterni/external

2010
Cinema - Macerata - Italy
LAMINAM ESTERNA
Blend Nero 1000x3000





2010
Cinema - Macerata - Italy
LAMINAM ESTERNA
Blend Nero 1000x3000

esterni/external



2010
Commercial Building - Seoul - South Korea
LAMINAM 3+
Collection Moro, Neve, Corallo, Arancio, Notte

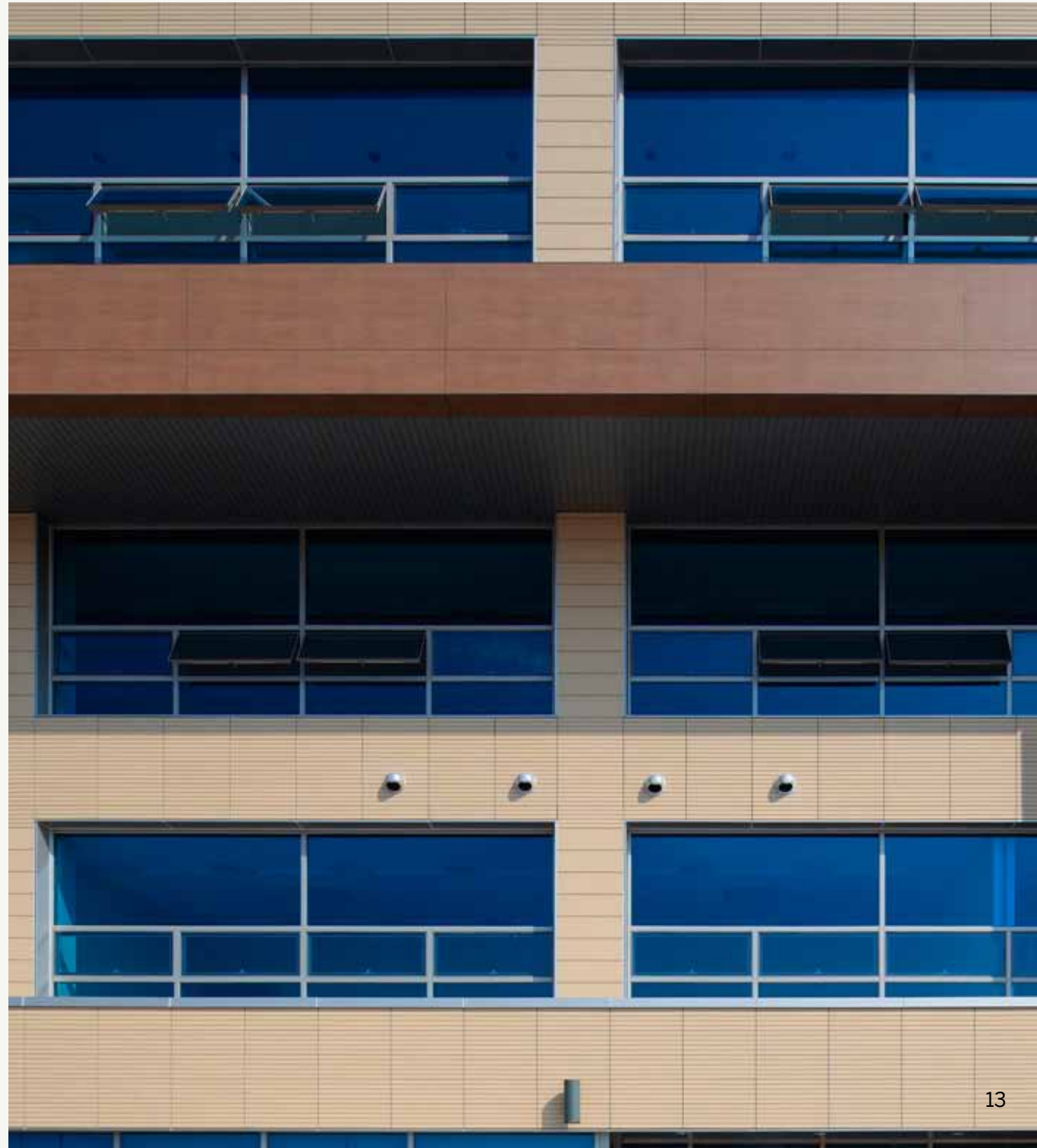
2010
Commercial Building - Seoul - South Korea
LAMINAM 3+
Collection Moro, Neve, Corallo, Arancio, Notte



esterni/external

2012
Songdo - Seoul - South Korea
LAMINAM 3+





2012
Songdo - Seoul - South Korea
LAMINAM 3+

esterni/external

2009
Residence 1,2 Irodaházak - Budapest - Hungary
LAMINAM 3+
Sketch Tortora, Moro

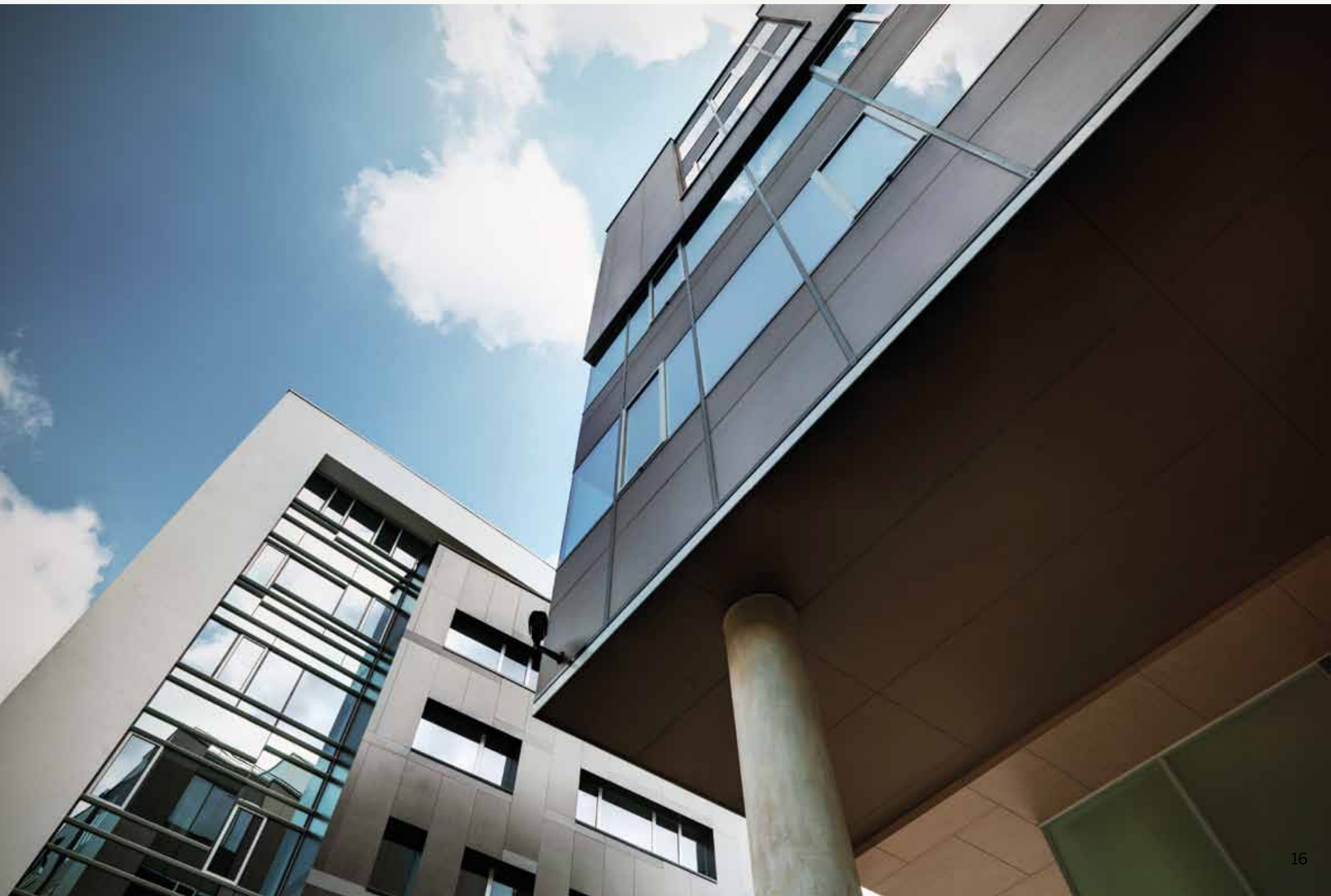




2009
Residence 1,2 Irodaházak - Budapest - Hungary
LAMINAM 3+
Sketch Tortora, Moro

esterni/external

2009
Residence 1,2 Irodaházak - Budapest - Hungary
LAMINAM 3+
Sketch Tortora, Moro

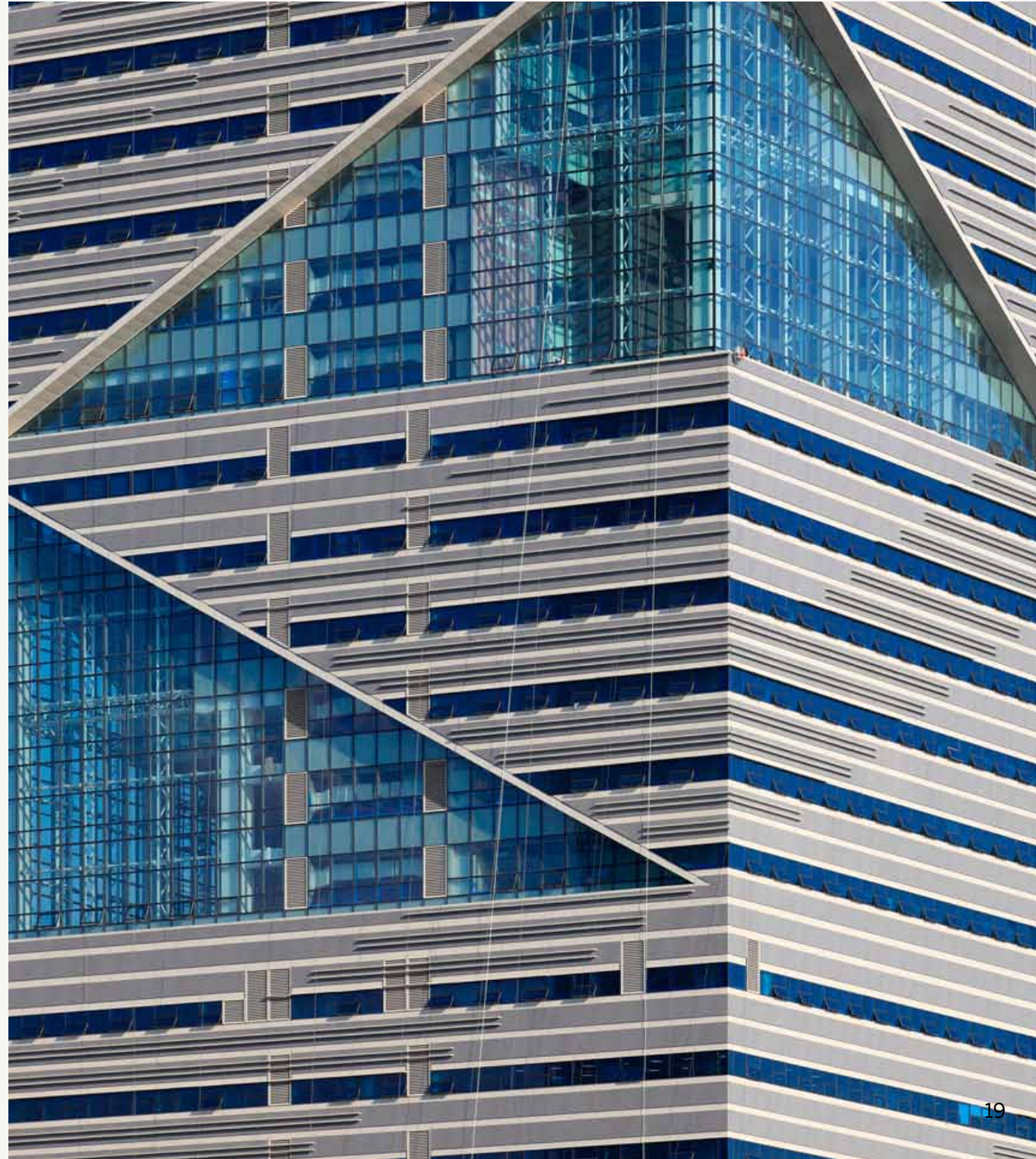




esterni/external



2012
I-Tower - Seoul - South Korea
LAMINAM 3+
Collection Fumo



2012
I-Tower - Soul - South Korea
LAMINAM 3+
Collection Fumo

esterni/external



2012
Coop - Viareggio - Italy
LAMINAM 3+
Oxide Moro, I Naturali Travertino Avorio



esterni/external

2008
Bologna-Florence Motorway Tunnel - Italy
LAMINAM 3+
Collection Avorio 1000x3000



2008
Bologna-Florence Motorway Tunnel - Italy
LAMINAM 3+
Collection Avorio 1000x3000



esterni/external

2009
Hotel Plaza - South Korea
LAMINAM 3+
Oxide Moro, various size





2009
Hotel Plaza - South Korea
LAMINAM 3+
Oxide Moro, various size

esterni/external

2013
Natali Building - La Spezia - Italy
LAMINAM 3+
Blend Nero, various size



2013
Natali Building - La Spezia - Italy
LAMINAM 3+
Blend Nero, various size



esterni/external

2013
Forum Shopping Center - Nis - Serb Republic
LAMINAM 3+
Metropolis Nero, Collection Nero





2013
Forum Shopping Center - Nis - Serb Republic
LAMINAM 3+
Metropolis Nero, Collection Nero

esterni/external



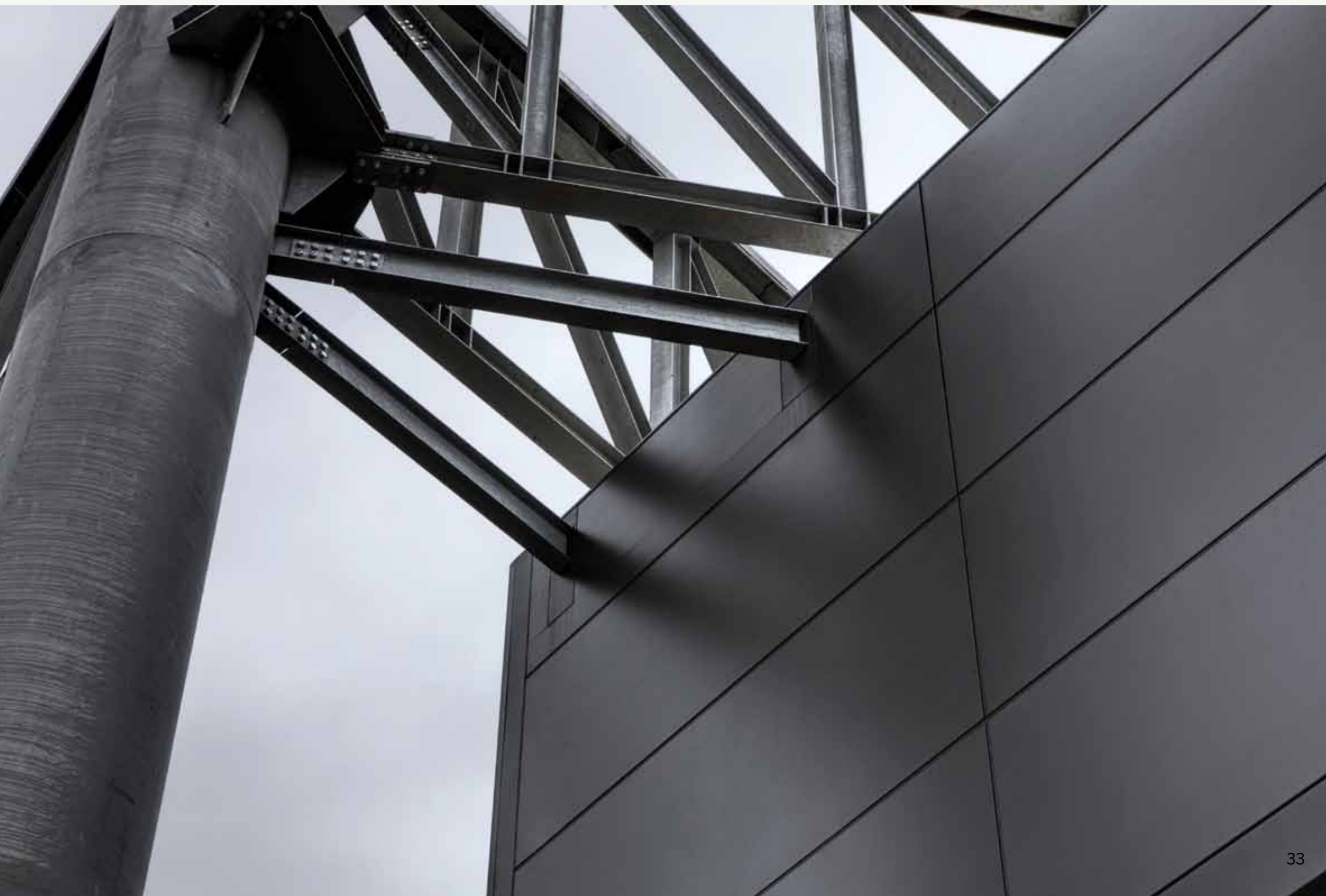
2013
Yangjae-dong - Seoul - Korea
LAMINAM 3+
Filo



esterni/external

2012
Chateaux d'Ax - Perignano - Pisa - Italy
LAMINAM 3+
Collection Nero





esterni/external



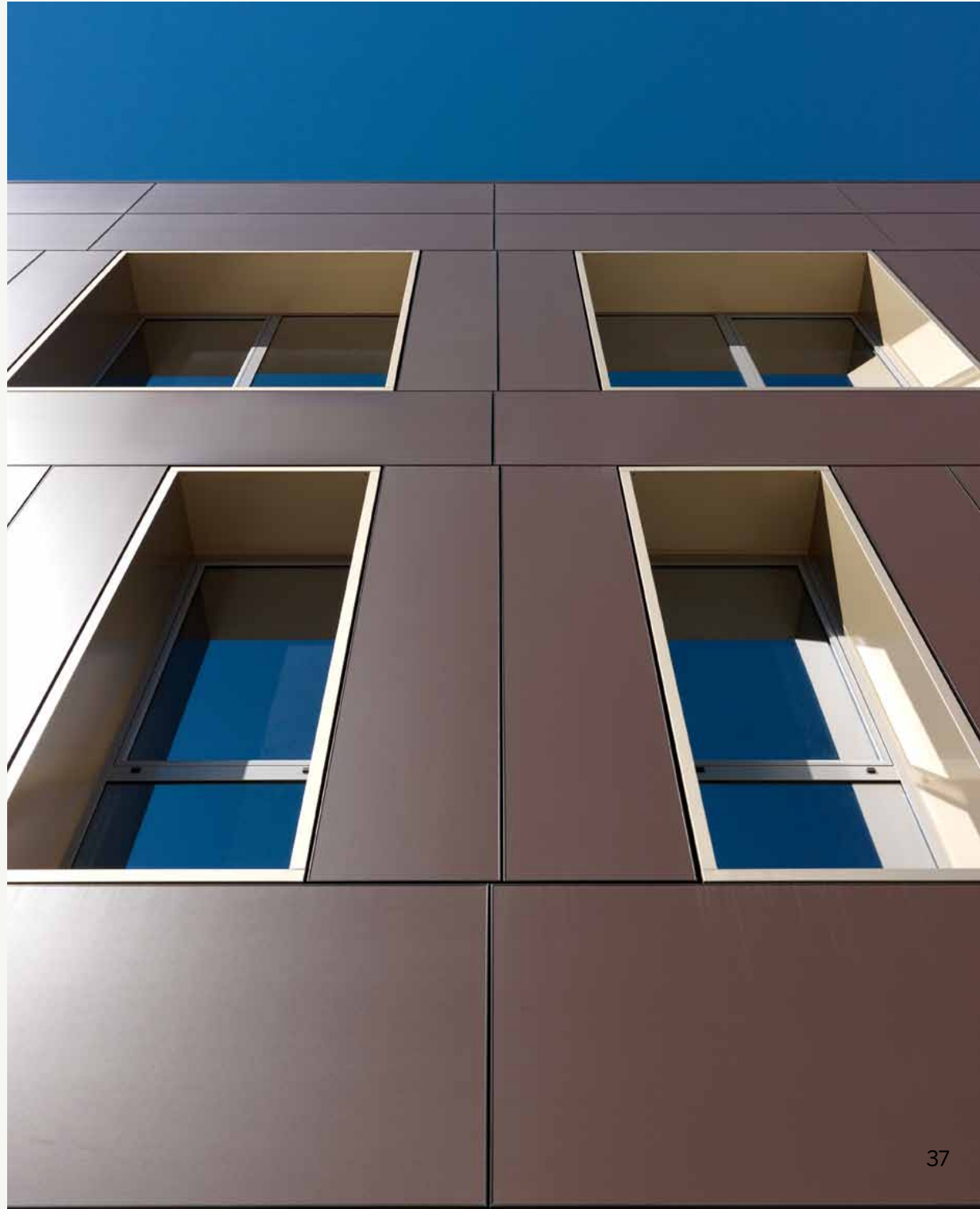
2010
Interior Covering of Swimming Pool - Private House - Holland
LAMINAM 7
Oxide Perla 1000X1000, 1000X1600



esterni/external

2012
Steda - Bassano del Grappa - Italy
LAMINAM 3+
Collection Moro



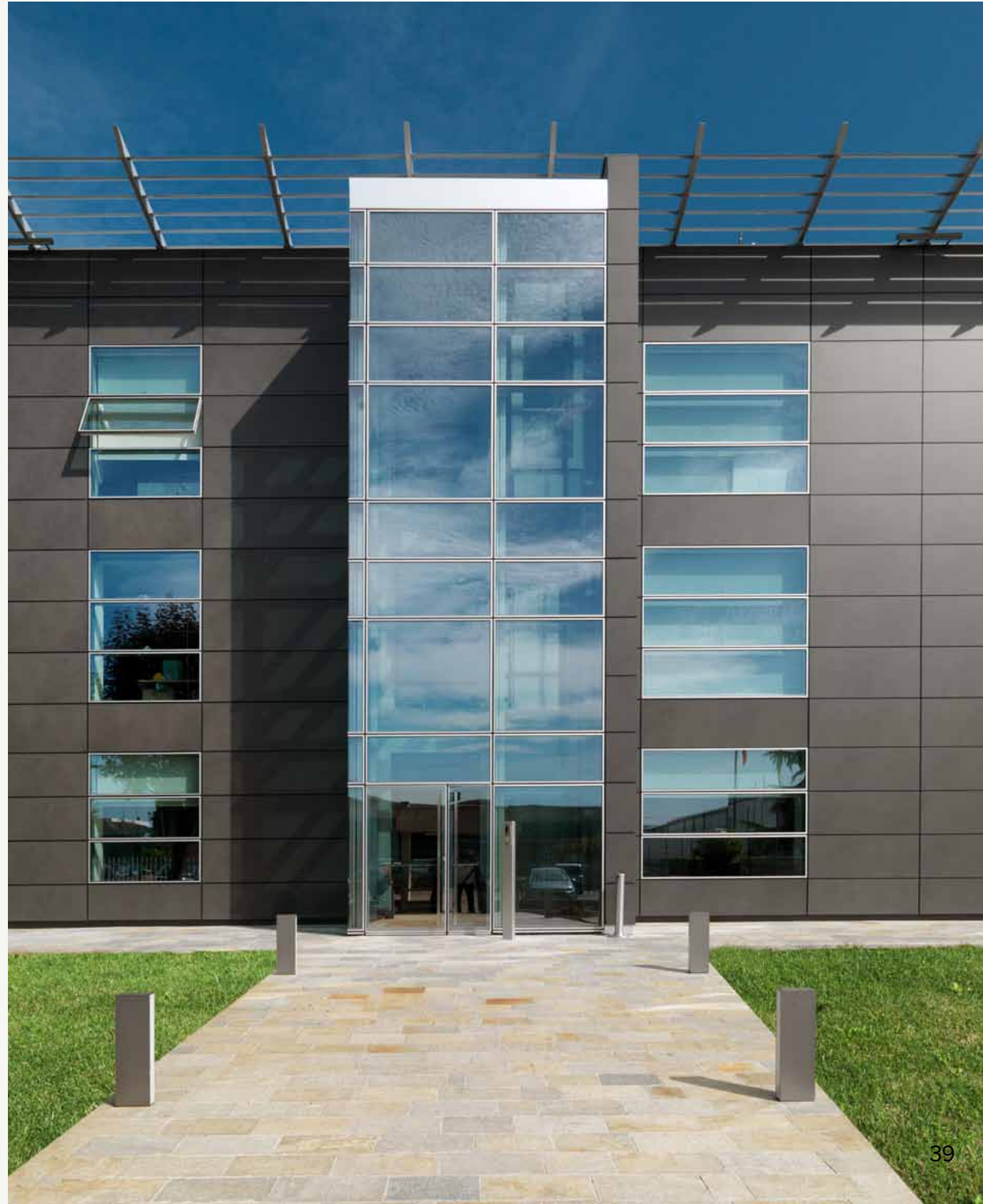


2012
Steda - Bassano del Grappa - Italy
LAMINAM 3+
Collection Moro

esterni/external

2012
Gamma Meccanica - Reggio Emilia - Italy
LAMINAM 3+
Blend Nero



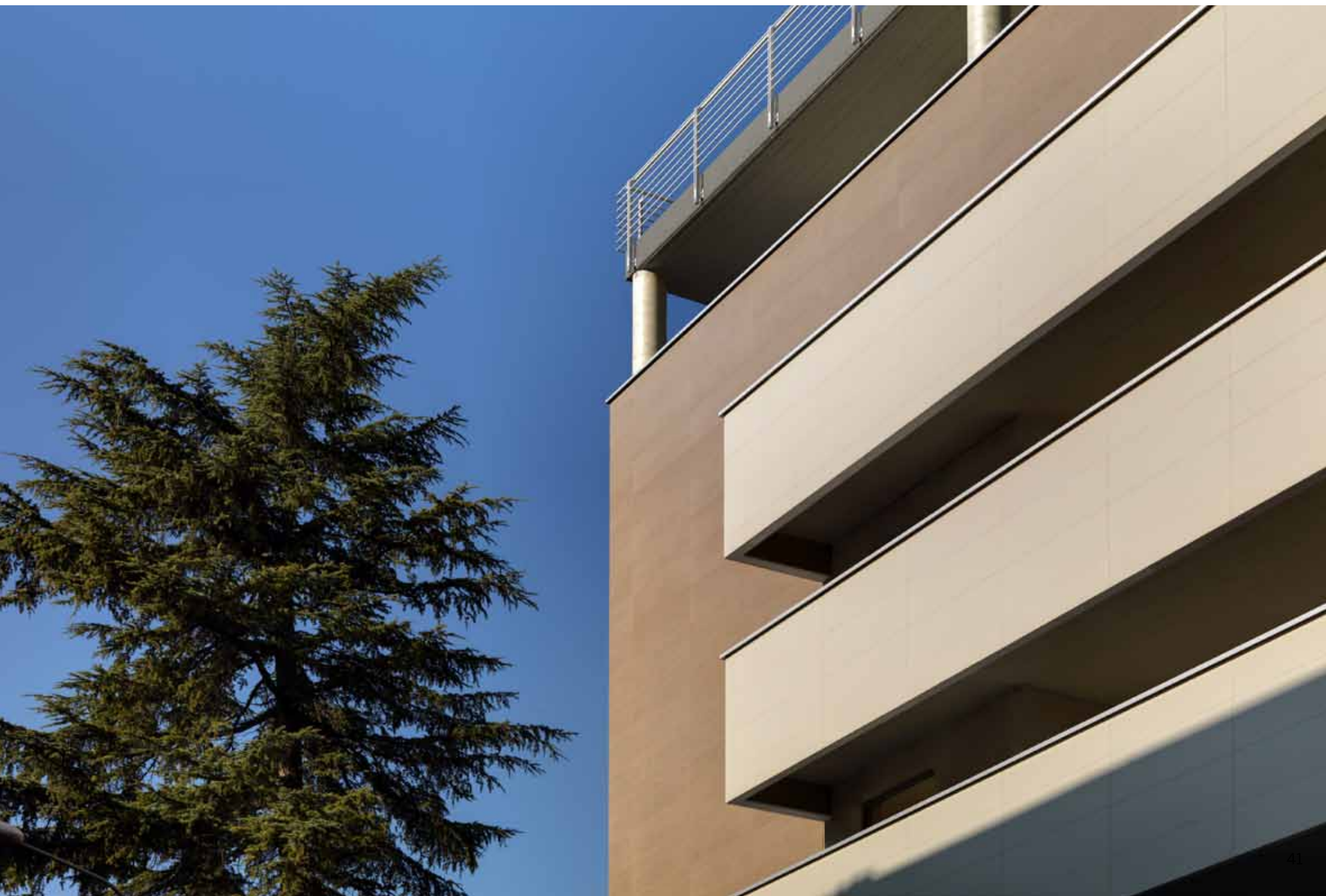


2012
Gamma Meccanica - Reggio Emilia - Italy
LAMINAM 3+
Blend Nero

esterni/external

2010
Office Building Market - Budapest - Hungary
LAMINAM 3+
Blend Nero 1000x3000





esterni/external



2009
Residence Kacsá Ganz - Budapest - Hungary
LAMINAM 3+
Metropolis, Nero, Neve
1000x3000

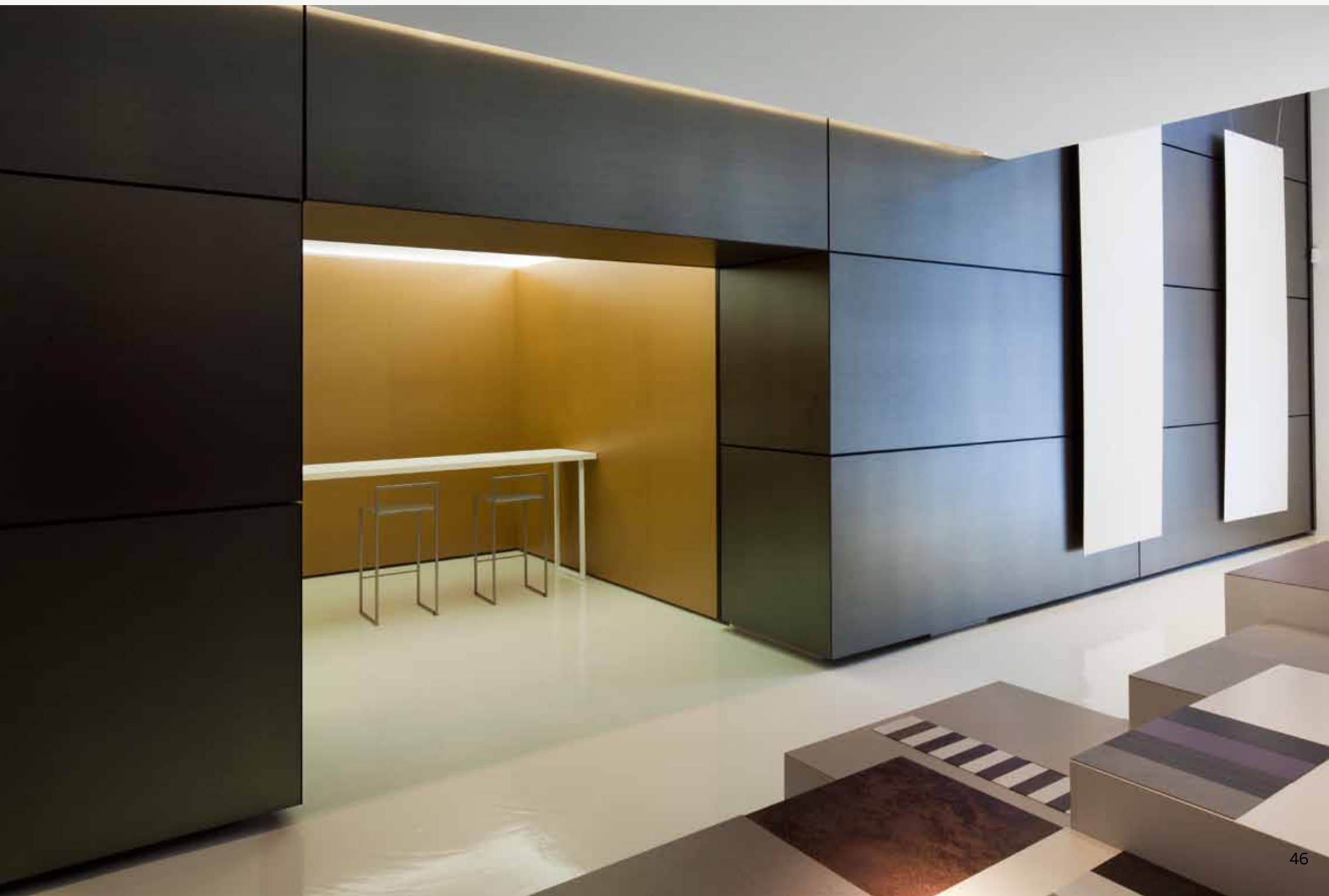


interni /
+interior /





2011
Laminam Milano Headquarters - Milan - Italy
LAMINAM 3+
Filo Mercurio, Argento, Pece, Brina





2012
Laminam Milano Headquarters - Milan - Italy
LAMINAM 3+
Various colours
Various size

interni/interior

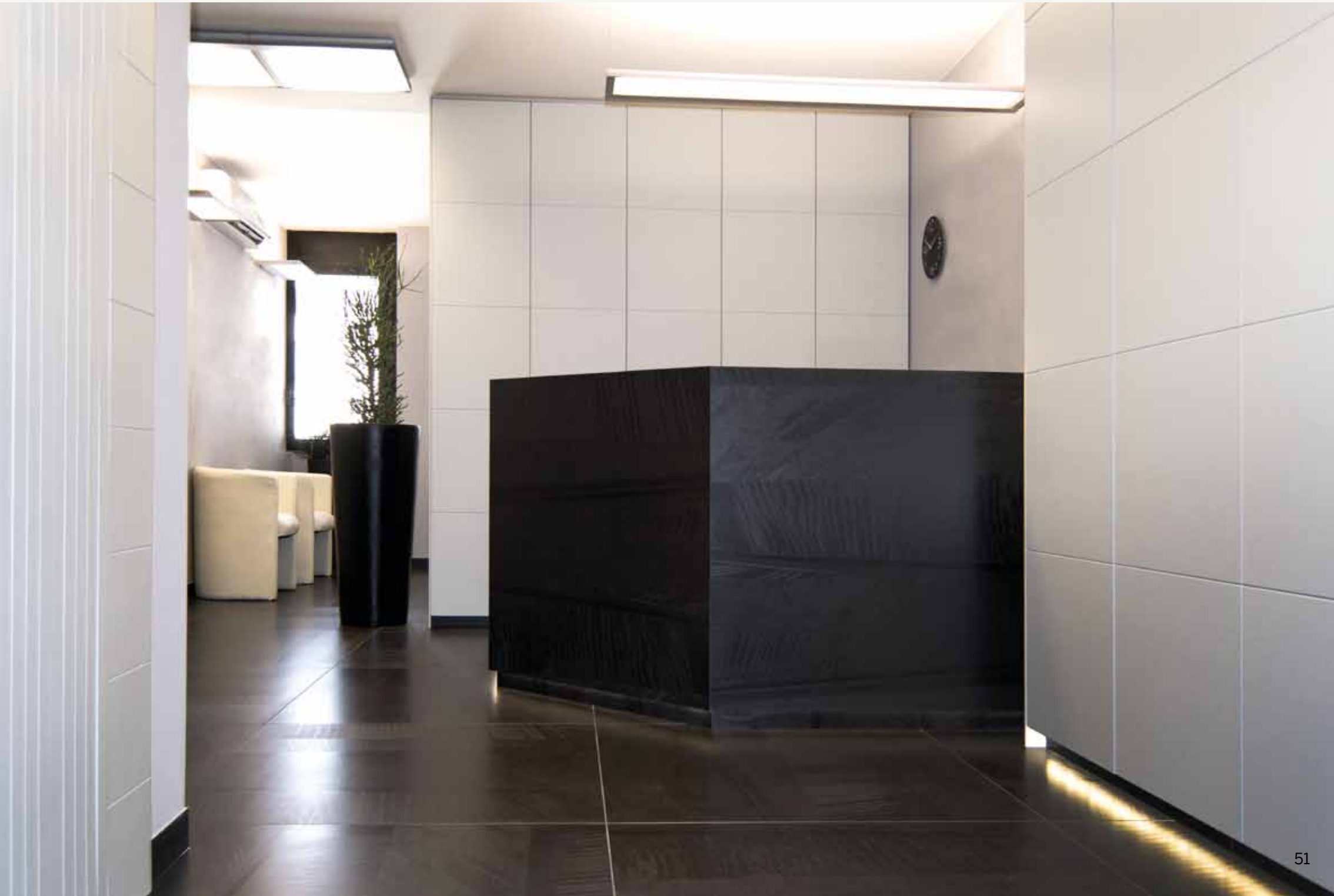


2012
Laminam Milano Headquarters - Milan - Italy
LAMINAM 3+
Filo Rame, Filo Ghisa
1000x3000



2012
Laminam Milano Headquarters - Milan - Italy
LAMINAM 3+
Various colours
Various size

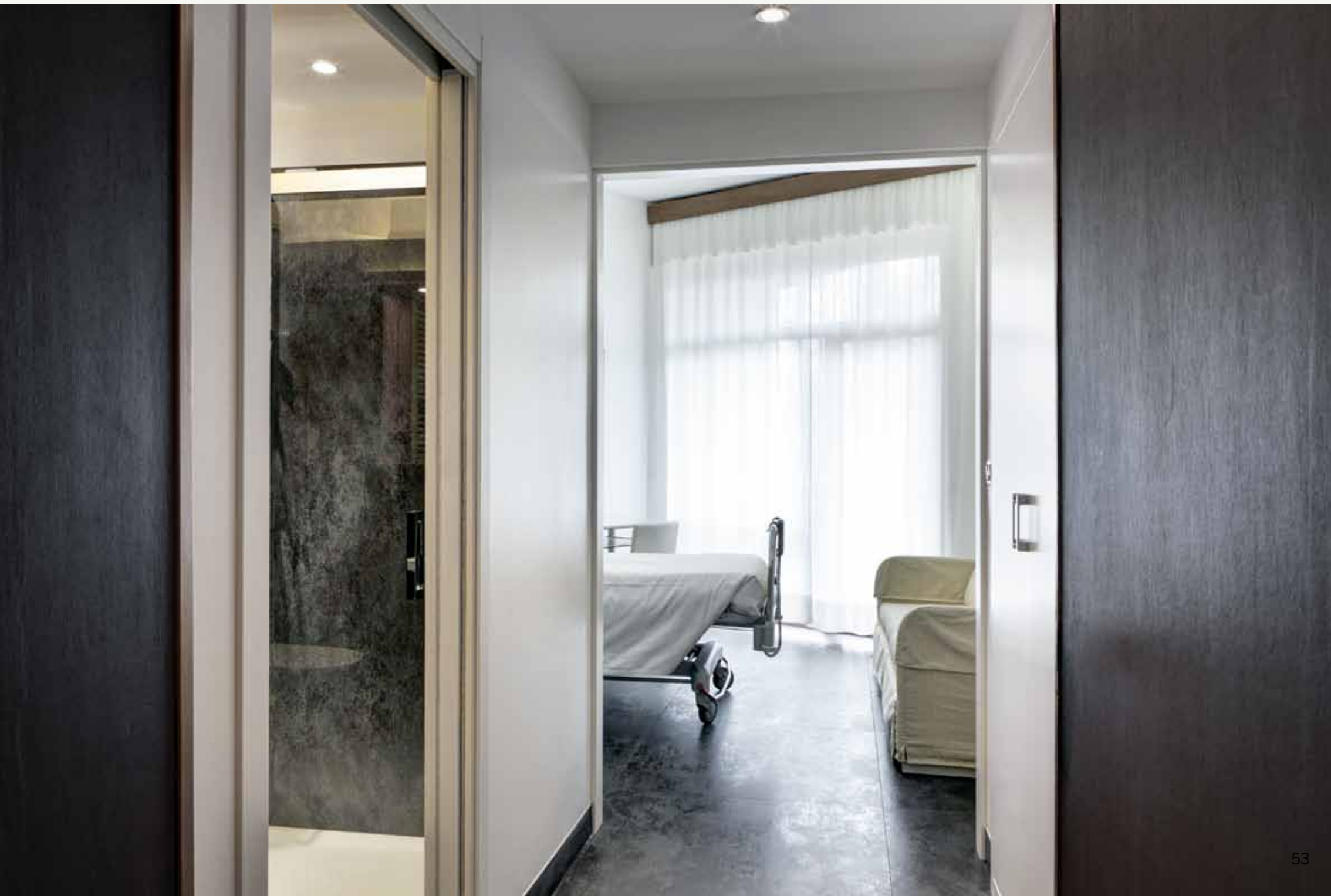




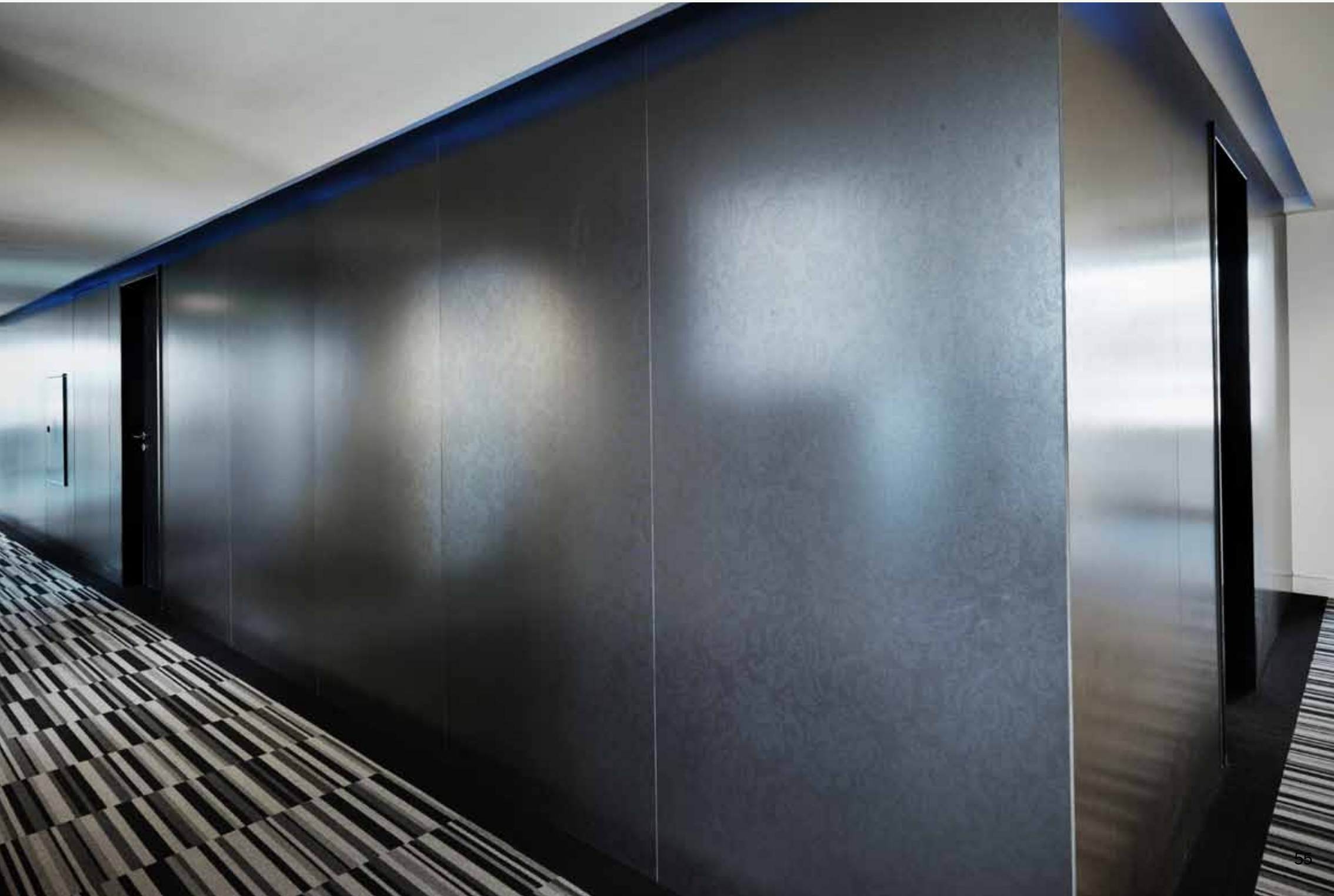
interni/interior

2013
Hospital - Le Betulle - Appiano Gentile - Como - Italy
LAMINAM 3+
Oxide Nero







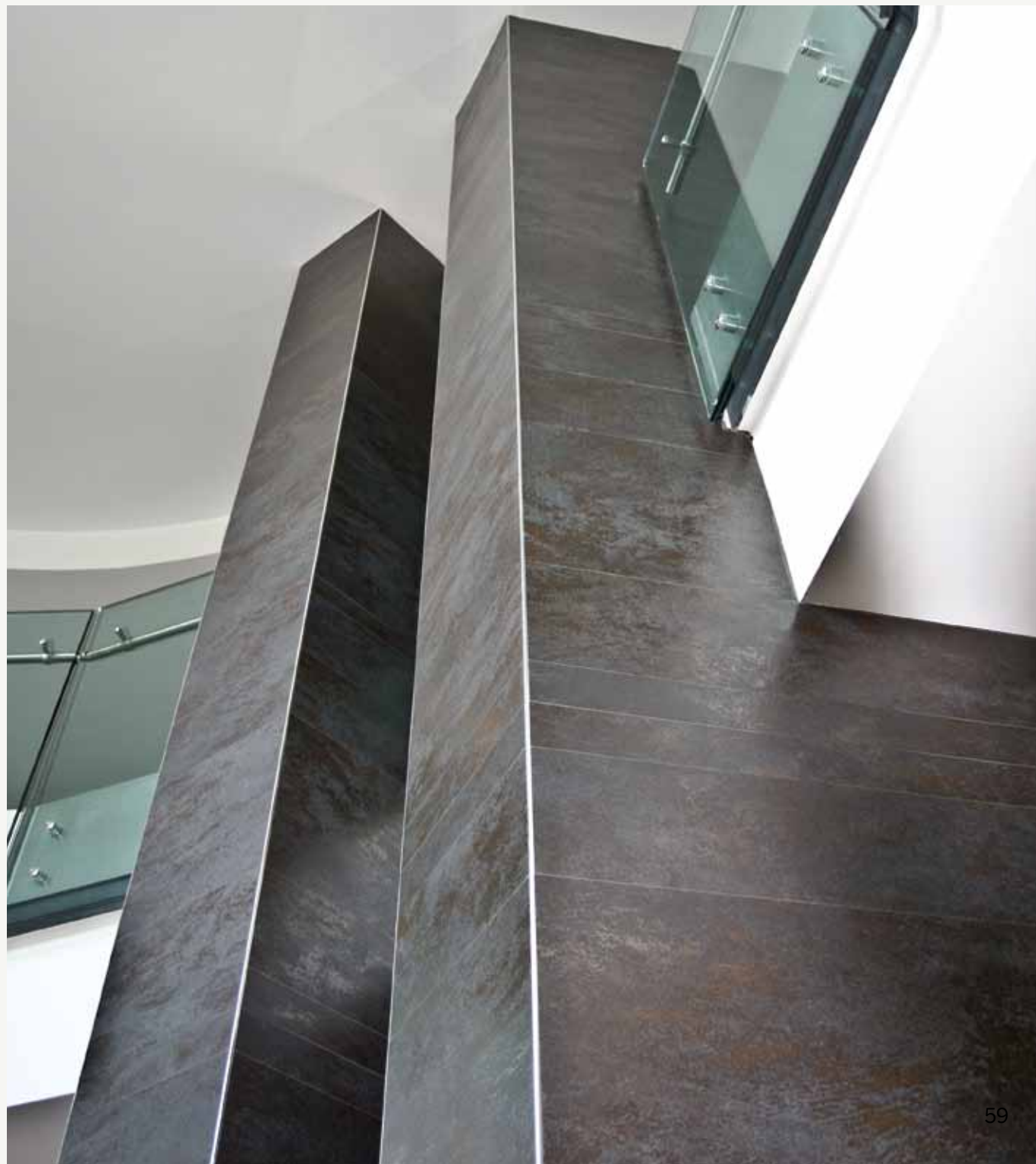




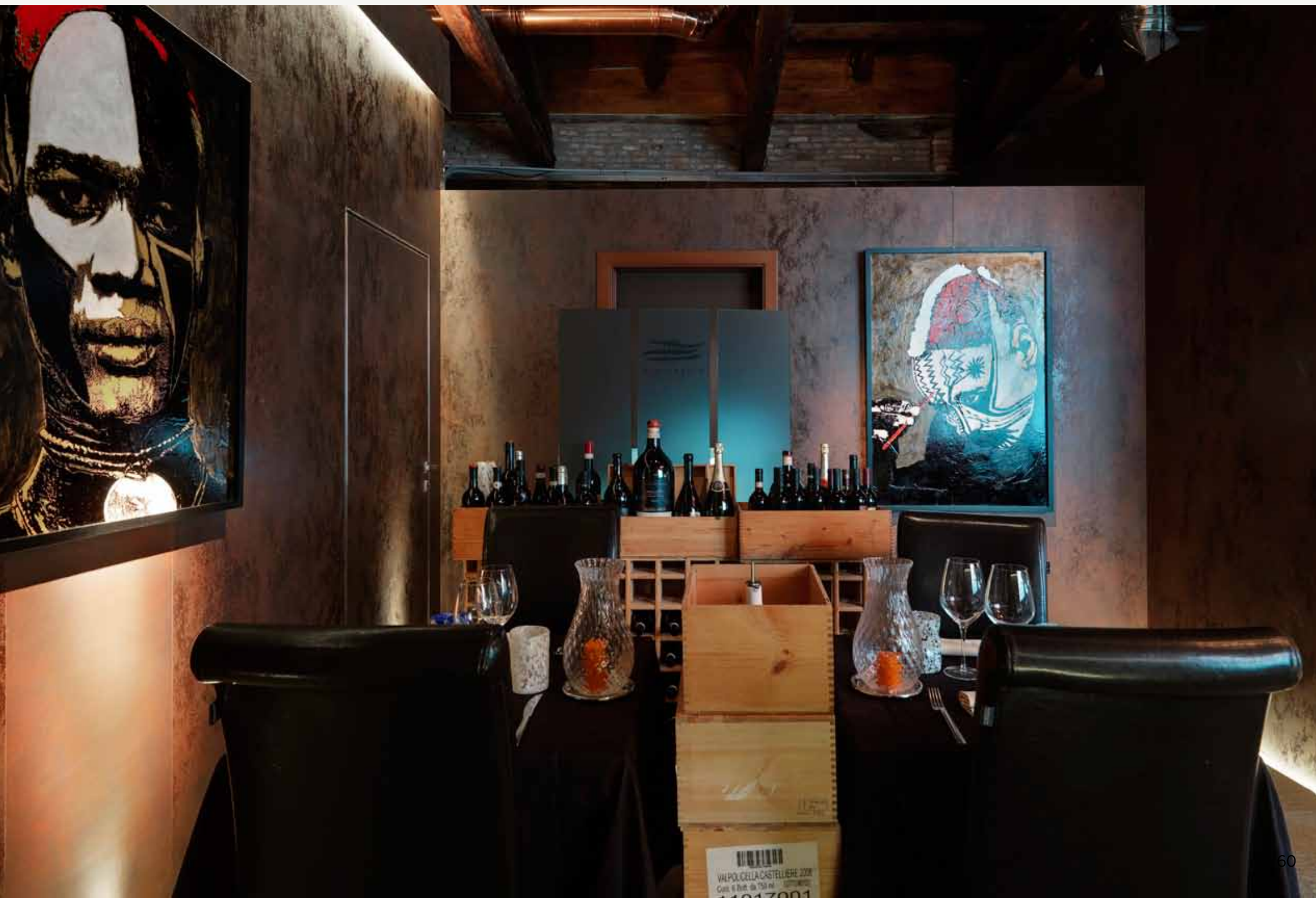


2013
Power Station of Art - Shanghai - China
LAMINAM 3+
Oxide Nero





2011
UNA Hotel - Modena - Italy
LAMINAM 3+
Oxide Moro





2013
Algiubagio Reastaurant - Venezia - Italy
LAMINAM 3+
Oxide Moro



2011
Private House - Rome - Italy
LAMINAM 3+
Sketch Moro



2011
Berg Luxury Hotel - Rome - Italy
LAMINAM 3+
Sketch, Tortora
1000x3000





interni/interior



2011
Yatch
LAMINAM 3+
Metropolis Neve 1000x1000





2013
Private House - Modena - Italy
LAMINAM 3+
Filo Mercurio



interni/interior



2013
Private House - Modena - Italy
LAMINAM 3+
Filo Brina



2013
Private House - Modena - Italy
LAMINAM 3+
Filo Rame











interni/interior

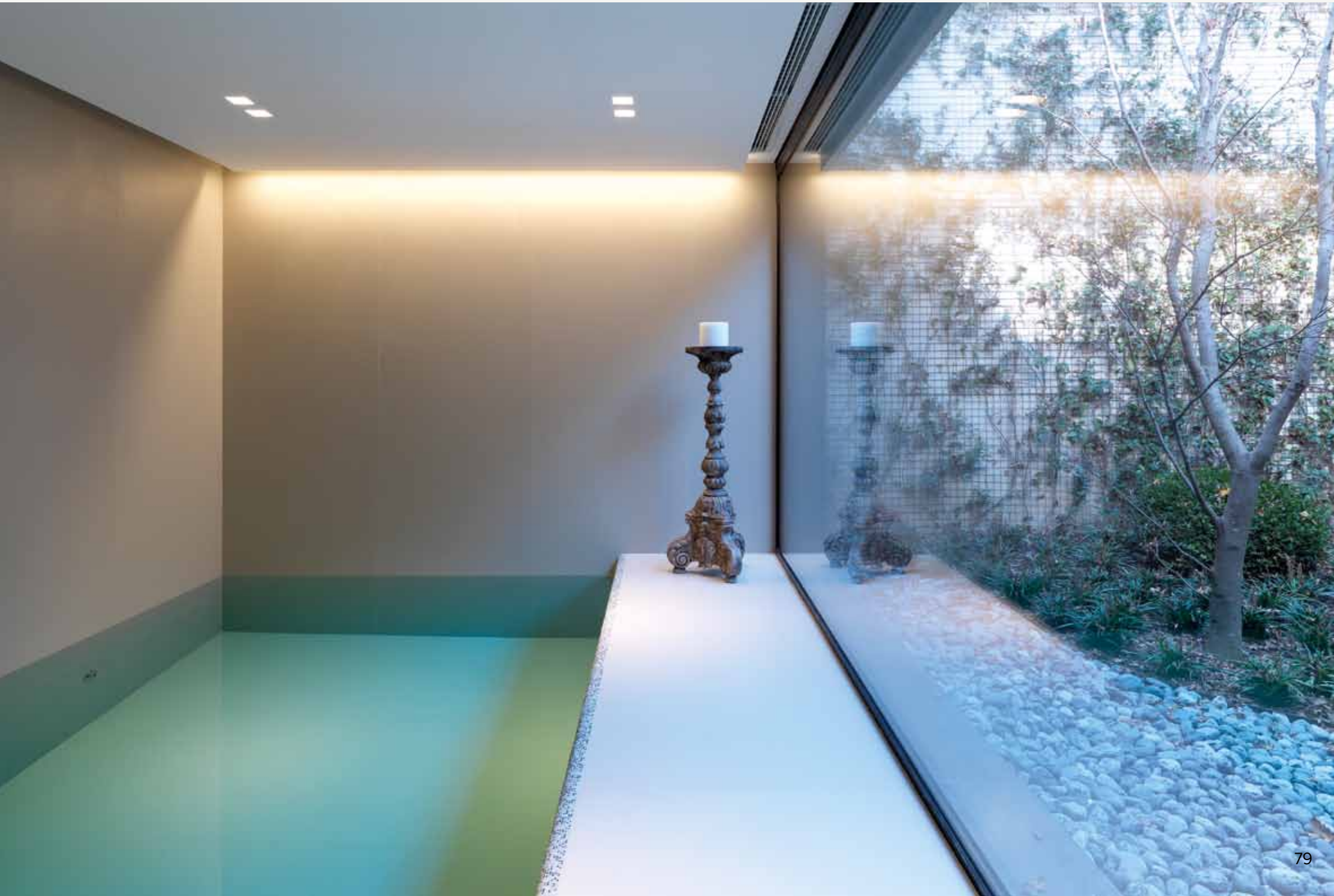
2011
Car Showroom - Milan - Italy
Collection 1000x1000



interni/interior



2011
Private House - Modena - Italy
LAMINAM 3+
Tredi, Basalto, 1000x3000



interni/interior



2011
Samsonite Store - Bruxelles - Belgium
LAMINAM 3+
Jungle Avorio



interni/interior



2013
Private House - Milano - Italy
LAMINAM 5
Fokos Roccia



2013
Private House - Milano - Italy
LAMINAM 5
Fokos Roccia



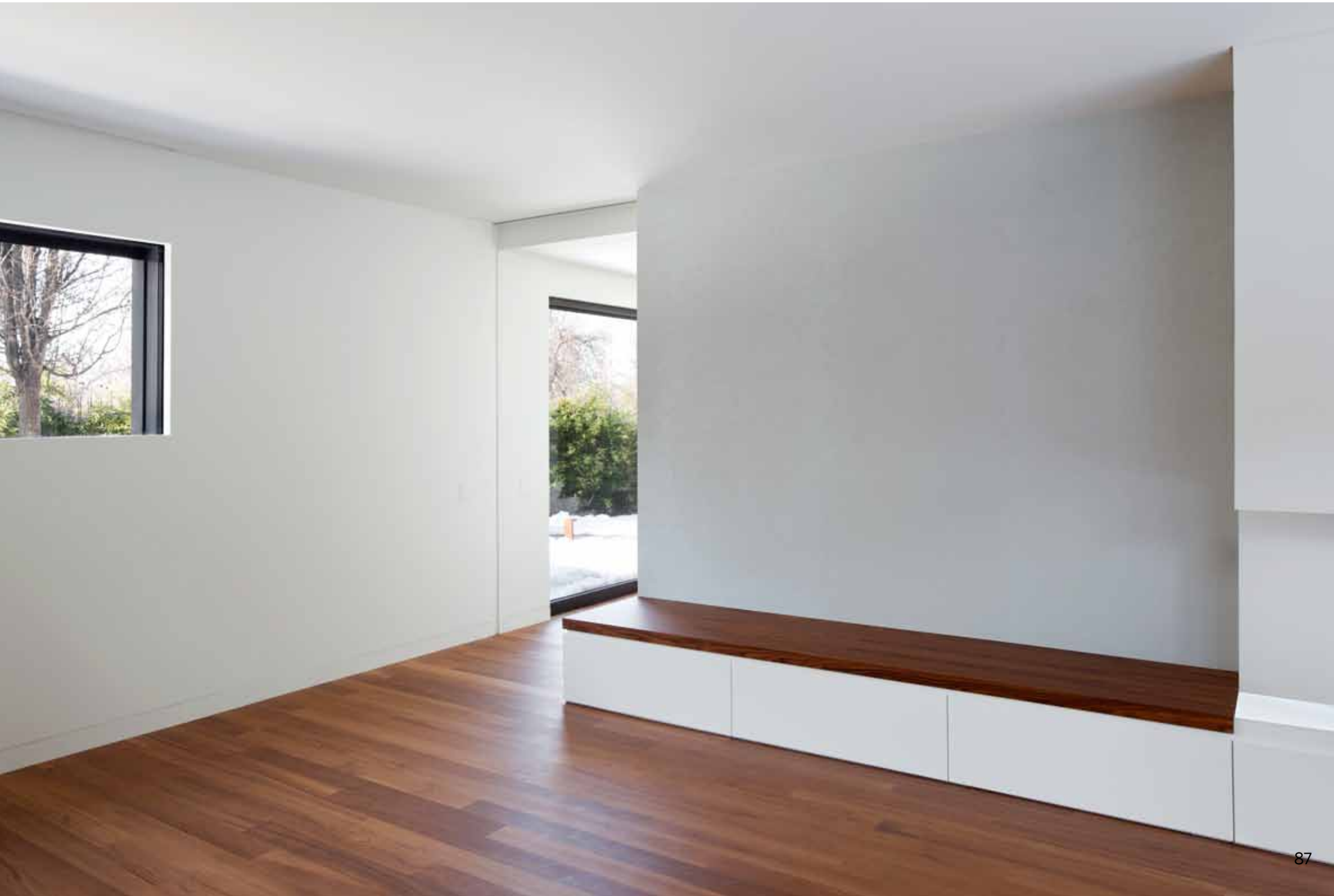


2013
Private House - Modena - Italy
LAMINAM 3+
Andy Carbone

interni/interior



2013
Private House - Modena - Italy
LAMINAM 3+
Andy Ghiaccio







arredamento e design /
furniture and design /

arredamento e design/



2011
Methis Table - Laminam Milano - Milan - Italy
LAMINAM 7
Filo Mercurio







2009
Table Conference - Headquarters ACIMAC - Italy
LAMINAM 3
Collection Nero

arredamento e design/



2010
Reception Desk Laminam S.p.a - Fiorano Modenese - Italy
LAMINAM 3+
Jungle Avorio



2011
Office cupboard
LAMINAM 3+
Filo Ghisa

arredamento e design/

2012
Zampieri Kitchen - Italy
LAMINAM 3+
Oxide Avorio





2012
Zampieri Kitchen - Italy
LAMINAM 3+
Oxide Avorio

arredamento e design/



2010
Kitchen - Private House - Modena - Italy
LAMINAM 3
Collection Tortora







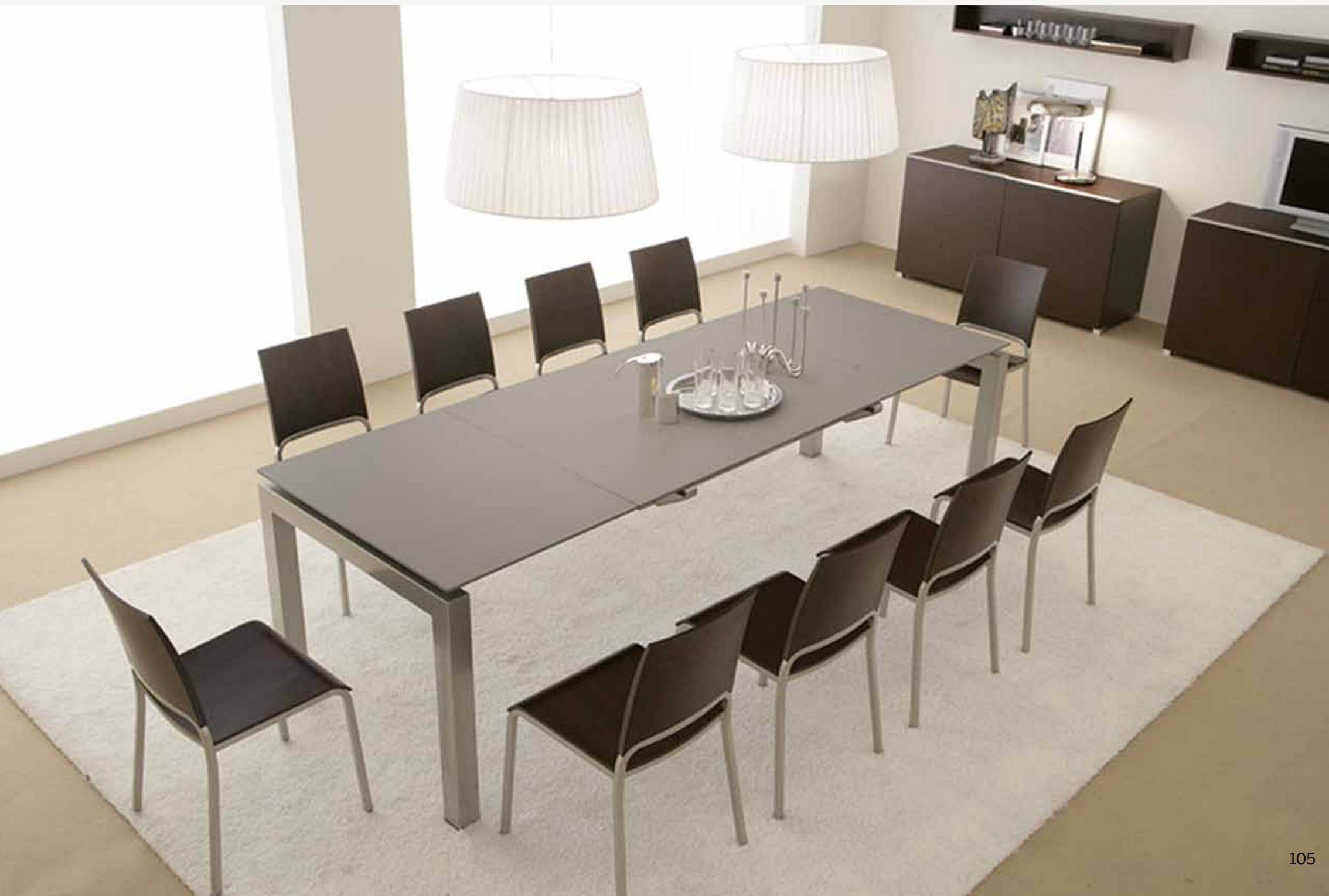
2011
Door - Italy
LAMINAM 3+3
Filo Ghisa







2006
Oikos Reinforced Door - Italy
LAMINAM 3
Collection Nero



arredamento e design/



2012
Laminam ON TOP - Italy
Metropolis Neve







arredamento e design/

2012
Kitchen - Italy
LAMINAM ON TOP
Collection Nero





arredamento e design/



2011
Ornatop Kitchen - Italy
LAMINAM 3
Oxide Moro



arredamento e design/



2011
Ornatop Kitchen - Italy
LAMINAM 3
Oxide Moro



2011
Ornatop cupboard - Italy
LAMINAM 3
Oxide Moro

Cod. LAMC000225 4/2013
Campionatura gratuita di modico valore ai
sensi del DPR 633/72 e succ.modi che art.2
Copyright 2012 Laminam S.p.A.

